

4. Monitoring Specific PSSNMPv4 cards

Double click the selected SNMP device from the device list (refer to Figure 3-2) to open the web page as shown in Figure 4-1.

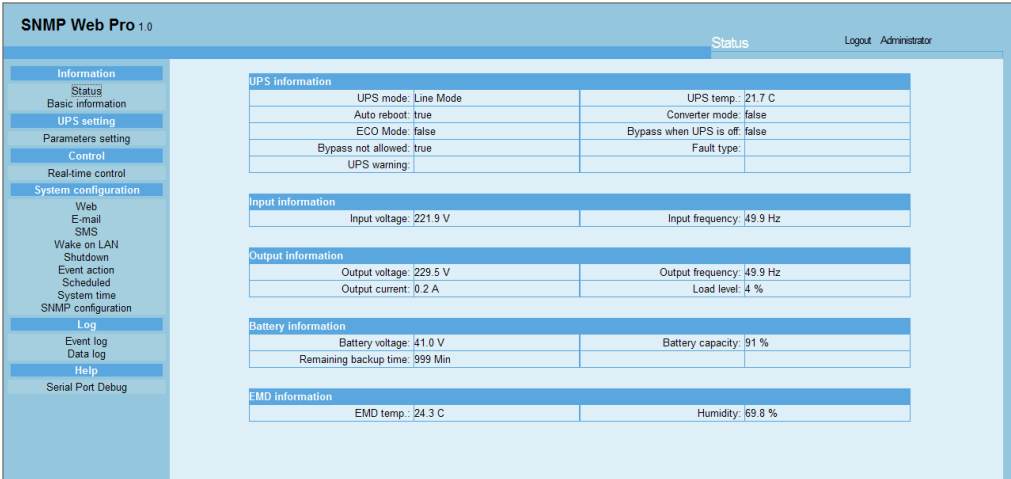


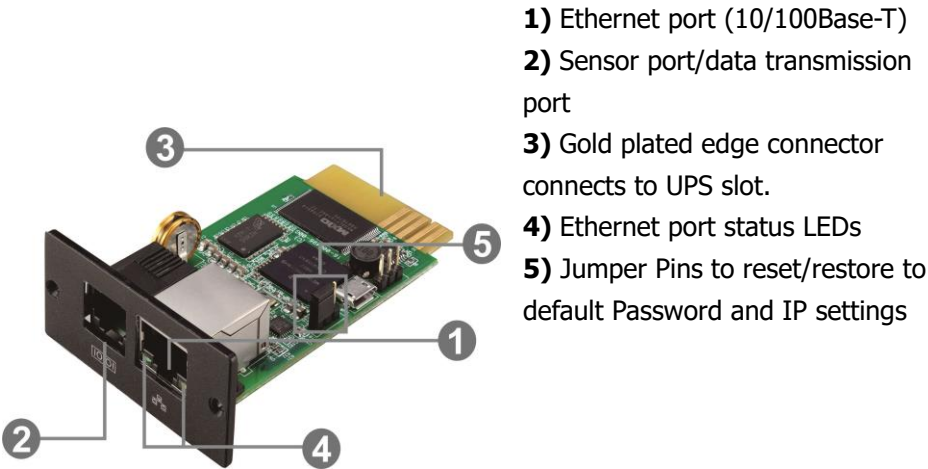
Figure 4-1

Please see SNMP Web Manager User Manual for further details and configurations.

**Monitoring multiple PSSNMPv4 cards.** To simultaneously monitor and manage multiple SNMP cards, please download **PowerShield SNMP Multi View** software from: [www.powershield.com.au/download-2/](http://www.powershield.com.au/download-2/)



1. Overview



PSSNMPv4 card Ethernet port status LEDs:

100M LED (Green)	On	Port is operating at 100Mbit/s
	Off	Current web bandwidth is 10Mbit/s
Link status LED (Yellow)	Flash	Link Active
	Off	Card is not connected to the network

The SNMP card is supplied with server assigned DHCP address settings. The user can choose to apply a static IP address or server assigned IP address via the web server of the SNMP card, SSH Client, or SNMP Web Manager.

**Note:** As a final option, users can reset/restore the IP settings and Password.

### To reset and restore the default static IP address and Password:

Please use the following Table for the Jumper Pins to activate default settings.

Pin #	Status	Description
Pin 1 & Pin 2	Closed	Normal operation
Pin 2 & Pin 3	Closed	After re-connecting utility, the IP address of SNMP web card and password will restore to default setting. Default static IP address: (192.168.102.230) Default password: 12345678

**NOTE: The reset & restore process should only be used as a rollback and recovery option to reset the card to the factory default settings.**

After the Password and IP setting have been reset/restored to default, be sure to change the jumper setting back to connect Pin 1 and Pin 2 for normal operation.

## 2. Installation and Connection

Follow the procedure below to install and connect the SNMP card:

**Step 1:** Remove the cover of the intelligent slot on the back panel of the UPS and retain the screws.

**Step 2:** Slide the card into the open slot and secure with screws from step 1. (see Figure 2-1)



Figure 2-1

**Step 3:** Plug the Ethernet cable into the Ethernet port (RJ-45) on the SNMP card.

**Step 4:** Sensor port. Connect a second cable to the sensor port on the SNMP card and the other end to the optional environmental monitoring device.

## 3. Configuration

- Please download and install SNMP Web Manager from [www.powershield.com.au/download-2/](http://www.powershield.com.au/download-2/)
- The Installer will create a shortcut on your desktop. Double Click on icon:



Figure 3-1

- Press Scan IP address to search all SNMP devices in the LAN. If DHCP service is not available, the SNMP web manager defaults to static IP address 192.168.102.230, default subnet mask 255.255.255.0, and default gateway 192.168.102.254. Users can modify IP address or apply DHCP mode through web server of the SNMP card, SSH Client or SNMP Web Manager. See SNMP Web Manager User Manual, 4.3 Settings IP.

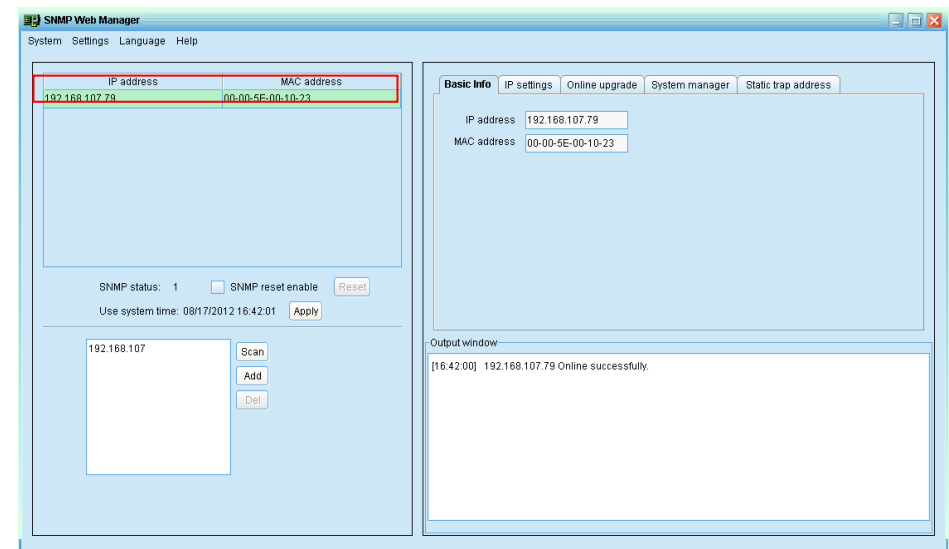


Figure 3-2

- Users can modify the IP settings, online upgrade, password management, and static trap address setting in SNMP Web Manager interface. The password is required for any modifications. The default password is 12345678.