

PLATINUM MODULAR

20-300kVA



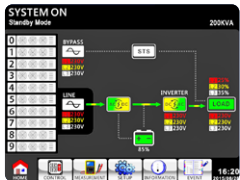
The Platinum Modular UPS Range is Power Shield's Premium Range of modular UPSs designed with Australian conditions and high end requirements in mind. The technology is based on a tried and tested platform ensuring reliability and performance. The Platinum Modular is designed to be used in a wide range of applications from data centres to manufacturing, hospitals, military and mining environments to name a few. It provides the best power solution for your critical equipment.

FEATURES

5.7" LCD screen (standard)



10" touch screen LCD screen (optional)



REDUNDANCY

The modular N+1 / N+X topology provides for an ultra reliable uninterruptible power supply to the load.

Modular design is applied in power module, static switch module and battery module. This simplifies maintenance and replacement with low Mean Time To Repair (MTTR).

As a result of modular design the Mean Time Between Failure (MTBF) is significantly increased.

HIGH SCALABILITY

The UPS that grows with your business. As your power demand increases simply add more power modules.

Digital Signal Processor (DSP) control provides a reliable solution with high performance.

HIGH EFFICIENCY ONLINE DOUBLE CONVERSION

The Platinum Modular utilises true online double conversion technology with an efficiency of up to 96%. This significantly reduces overall To

FLEXIBLE BATTERY CONFIGURATION

Allows for options of 32, 36 or 40 batteries per string.

ADJUSTABLE CHARGING CURRENT

Platinum Modular provides maximum 6A for 20kW and 8A for 30kW charging current for every power module and it is adjustable based on requirement.

GRAPHIC SCREEN/MIMIC/LCD DISPLAY

Designed for easy management, Platinum Modular is equipped with a 5.7" graphic LCD screen. This interactive LCD display gives information on the unit's operation, alarm and control. The LCD also includes an informative mimic display.

Optional 10" colour, touch LCD display (factory fitted).

UNITY OUTPUT POWER FACTOR

Platinum Modular delivers unity output power (kVA=kW) providing the maximum power capacity to mission critical loads. It satisfies the requirements of the latest servers and optimises IT investment.

REAR VIEWS



PSPM90KB

PSPM120K

PSPM180K

PSPM120KB

PSPM240K



AUSTRALIAN DESIGNED
POWER PROTECTION
SOLUTIONS



**Power
Shield®**

CENTURION TOWER SELECTION GUIDE					
MODEL	PLATINUM MODULAR 90kW	PLATINUM MODULAR 120kW	PLATINUM MODULAR 120kW	PLATINUM MODULAR 180kW	PLATINUM MODULAR 300kW
Model Number	PSPM90KB	PSPM120KB	PSPM120K	PSPM180K	PSPM300K
Phase	3 phase in / 3 phase out				
Max Cabinet Capacity	90kW	120kW	120 or 80kW	180 or 120kW	300kW
One Power Module Capacity	30kVA / 30kW		30kVA / 30kW or 20kVA / 20kW		30kVA / 30kW
Max. Power Module No.	3	4	4	6	10
Battery Type	Built in battery		External battery		
Max. Battery Drawers PSBD10/9	12 x PSBD10/9 (120 x 12V*9Ah)	20 x PSBD10/9 (200 x 12V*9Ah)	—	—	—
INPUT					
Nominal Voltage (Vac)	3 x 380 / 400 / 415 (3Ph + N)				
Voltage Range	305–478VAC at 100% load; 208–304VAC at <70% load				
Nominal Frequency	50/60Hz (Auto sensing)				
Frequency Range	40Hz–70Hz				
Input Power Factor	> 0.99 at 100% load, >0.98 at 50% load				
Harmonic Distortion (THDi)	< 3% @ 100% load				
OUTPUT					
Nominal voltage (VAC)	3 x 380 / 400 / 415 (3Ph + N)				
Voltage Regulation (Steady state)	± 1% Typical (balanced load); ± 2% Typical (unbalanced load)				
Voltage Regulation (Transient)	± 5% Typical				
Nominal Frequency	50/60Hz				
Frequency Range (Synchronized range)	46Hz–54Hz or 56Hz–64Hz				
Overload Capability	1 hour for 110%, 10 mins for 125%, 1 min for 150% and 200ms for >150%				
Harmonic Distortion	1.5% THD (Linear Load); 4% THD (Non-linear Load)				
Efficiency	Up to 94.5%				
BATTERY/CHARGER					
Battery Options	32pcs or 36pcs or 40pcs (configurable)				
Temperature Compensation	Yes				
Maximum Charging Current	8A	8A for 30KW, 6A for 20KW power module			8A
ENVIRONMENT					
Operation Temperature	0–40°C (Note: De-rate output PF. 30-35oC PF = 0.9. 36-40oC PF = 0.8)				
Relative Humidity	0–95% non-condensing				
Altitude	<1000m for Nominal power (Note: UPS output power must be de-rated by 1% per 100m above 1000m)				
IP Class	IP 20				
MANAGEMENT					
RS232 / USB / Dry Contacts	RS232 & USB Supports Windows, Linux and MAC / Dry contacts included				
Optional SNMP	Power management from SNMP manager and web browser				
STANDARDS					
Safety	IEC/EN 60950-1; IEC/EN 62040-1				
EMC	IEC/EN 62040-2 Category C3				

All specifications are subject to change without notice. Backup times are approximate and variances may occur.

MODULAR PARTS			
MODEL	DESCRIPTION	DIMENSION D x W x H	WEIGHT (kg)
PSPM20	3P/3P 20kVA/20kW UPS module	650X440X132(3U)	34
PSPM30	3P/3P 30kVA/30kW UPS module	650X440X132(3U)	35
PSBD10/9	Battery drawer includes 10 pcs of 12V 9Ah batteries	735 X 107 X 155	26
PSPM90KB	Platinum Modular 90kW frame with battery option	1100X600X1475 (30U)	675
PSPM120KB	Platinum Modular 120kW frame with battery option	1100X600X2010 (42U)	932
PSPM120K	Platinum Modular 120kW frame	1100X600X1475 (30U)	333
PSPM180K	Platinum Modular 180kW frame	1100X600X1475 (30U)	435
PSPM300K	Platinum Modular 300kW frame	1100X600X2010 (42U)	549
PSBB280/9	Battery bank (30U). Includes 280pcs	1100X600X1475 (30U)	480
PSBB400/9	Battery bank (42U). Includes 400pcs	1100X600X2010 (42U)	760